

Bronze Bus Support Clamps

Type BS

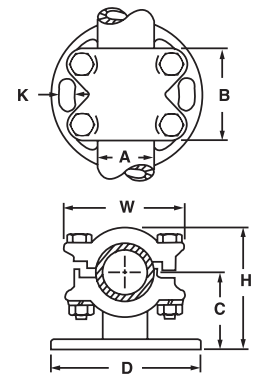
For copper tube to bolt circle

- Manufactured from high strength cast copper alloy
- Designed to mount tube on a post or pedestal type insulator
- Furnished with silicon bronze clamping hardware for corrosion resistance
- Stainless steel bolts and lockwashers furnished for cap mounting (standard)
- Rotate cap 180° for grip or slide fit
- Oval slots in base permit easy alignment
- For stainless steel base mounting hardware consisting of bolts, nuts, and lockwashers, suffix catalog number with “-BM”
- For tin plating, suffix catalog number with “-TN”



3" Bolt Circle Base

CATALOG NUMBER	IPS SIZE	APPROXIMATE DIMENSIONS (IN.)						K (SLOT WIDTH)	BOLT SIZE
		A	B	C	D	H	W		
BS-05-3	1/2	.84	2.00	2.00	4.25	2.75	2.38	.56	3/8
BS-07-3	3/4	1.05	2.00	2.00	4.25	2.75	2.63		3/8
BS-10-3	1	1.32	2.00	2.13	4.25	3.00	2.88		3/8
BS-12-3	1 1/4	1.66	2.63	2.38	4.25	3.38	3.63		1/2
BS-15-3	1 1/2	1.90	2.75	2.44	4.25	3.63	3.88		1/2
BS-20-3	2	2.38	2.75	2.56	4.25	4.06	4.50		1/2
BS-25-3	2 1/2	2.88	2.75	3.06	4.25	4.75	5.00		1/2
BS-30-3	3	3.50	3.25	3.00	4.25	5.69	6.13		5/8
BS-35-3	3 1/2	4.00	3.25	4.00	4.25	6.31	6.63		5/8
BS-40-3	4	4.50	3.25	4.25	4.25	6.81	7.13		5/8



5" Bolt Circle Base

CATALOG NUMBER	IPS SIZE	APPROXIMATE DIMENSIONS (IN.)						K (SLOT WIDTH)	BOLT SIZE
		A	B	C	D	H	W		
BS-05-5	1/2	.84	2.00	2.06	6.38	2.81	2.38	.69	3/8
BS-07-5	3/4	1.05	2.00	2.06	6.38	2.81	2.63		3/8
BS-10-5	1	1.32	2.00	2.19	6.38	3.06	2.88		3/8
BS-12-5	1 1/4	1.66	2.63	2.38	6.38	3.44	3.63		1/2
BS-15-5	1 1/2	1.90	2.75	2.44	6.38	3.69	3.88		1/2
BS-20-5	2	2.38	2.75	2.63	6.38	4.13	4.50		1/2
BS-25-5	2 1/2	2.88	2.75	3.06	6.38	4.81	5.00		1/2
BS-30-5	3	3.50	3.25	3.63	6.38	5.75	6.13		5/8
BS-35-5	3 1/2	4.00	3.25	4.00	6.38	6.38	6.63		5/8
BS-40-5	4	4.50	3.25	4.25	6.38	6.88	7.13		5/8